
**People
Places
Opportunities
Services
in England's Economic Heartland
– Vision 2050**

Emily Seabrook

Urbanisation
Future proofing
Optimising of the existing

Standardised methods
Productivity improvements
Intelligent freight management

Current position

A realistic vision: Part 1

A realistic vision: Part 2

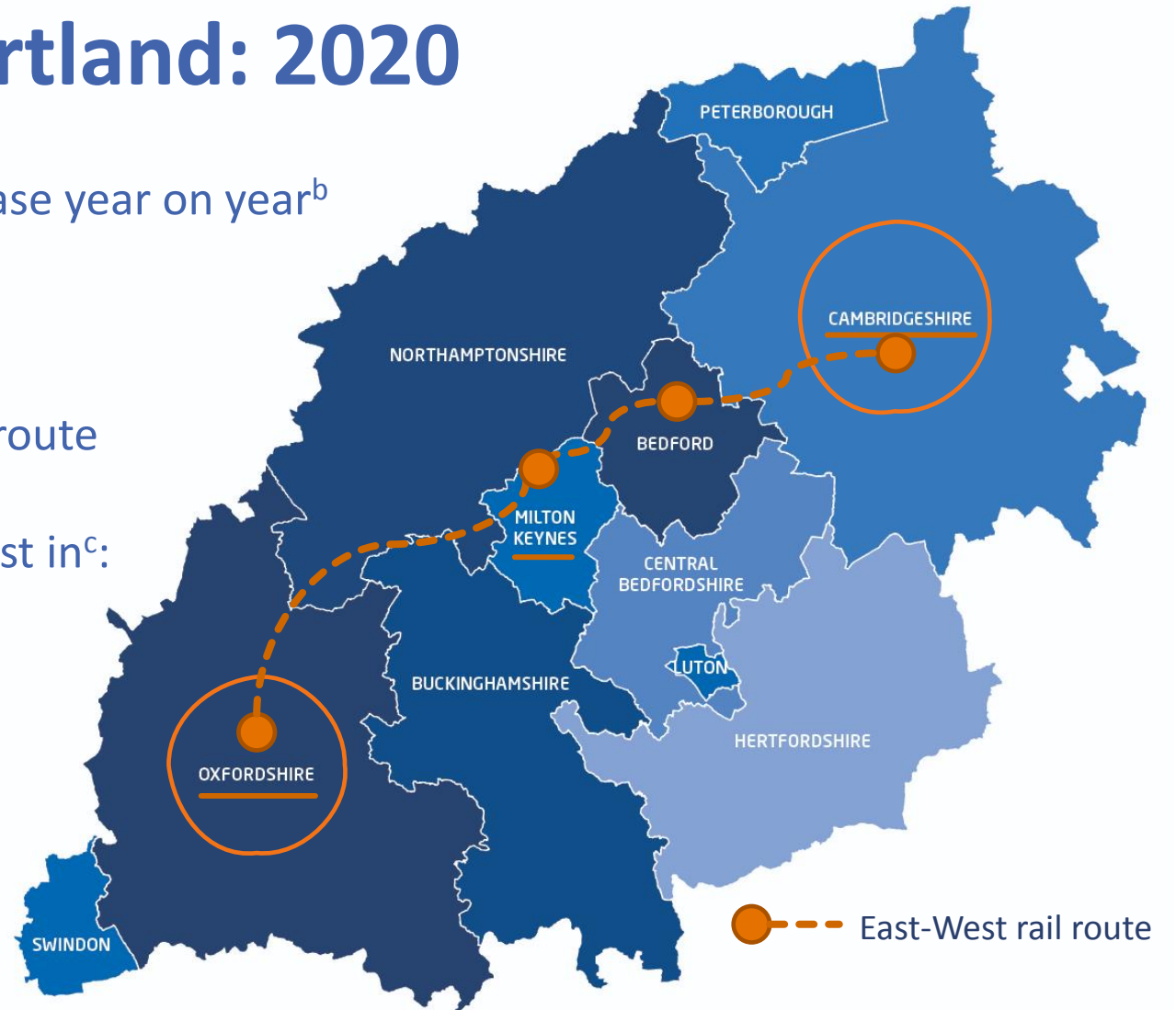
The vision in practice

Rural-city links
People centred connections
Infrastructure for investment

Culture supported active travel
Data driven design
Design for all

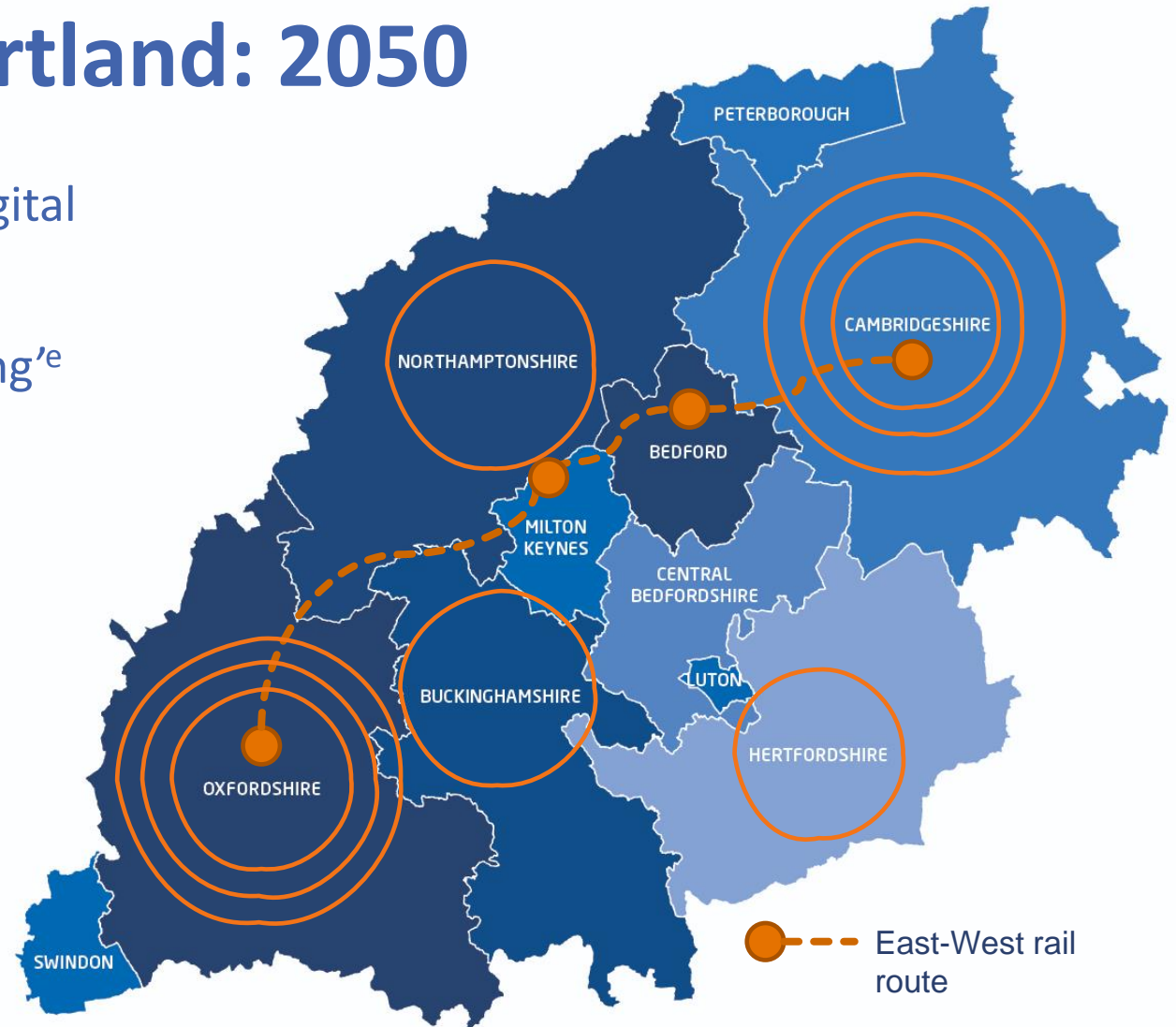
England's Economic Heartland: 2020

- Population of 5.1 million^a with ~+10% increase year on year^b
- Home to the 'The Growth Corridor'
- Planned development of the East-West rail route
- 'Investing in Britain' report top cities to invest in^c:
 1. Edinburgh
 2. Oxford
 3. Cambridge
- Investment in smart data driven design is needed to futureproof the success of the Economic Heartland



England's Economic Heartland: 2050

- Development in transport systems and digital communication essential for success^d
- Increases in flexi-working and 'trip chaining'^e
- Seamless rural-city connections
73% of rural city travel is done by car^f
- Arcadis report 'Investing in Britain'^c:
key development areas:
 - Reducing congestion
 - Create more green spaces
 - Increase public transport use
- Decarbonising agenda met as priority

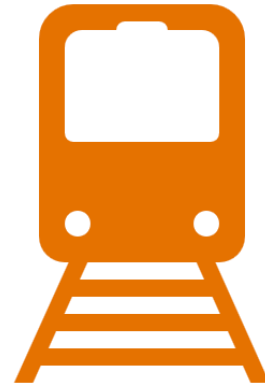


A realistic vision: Part 1



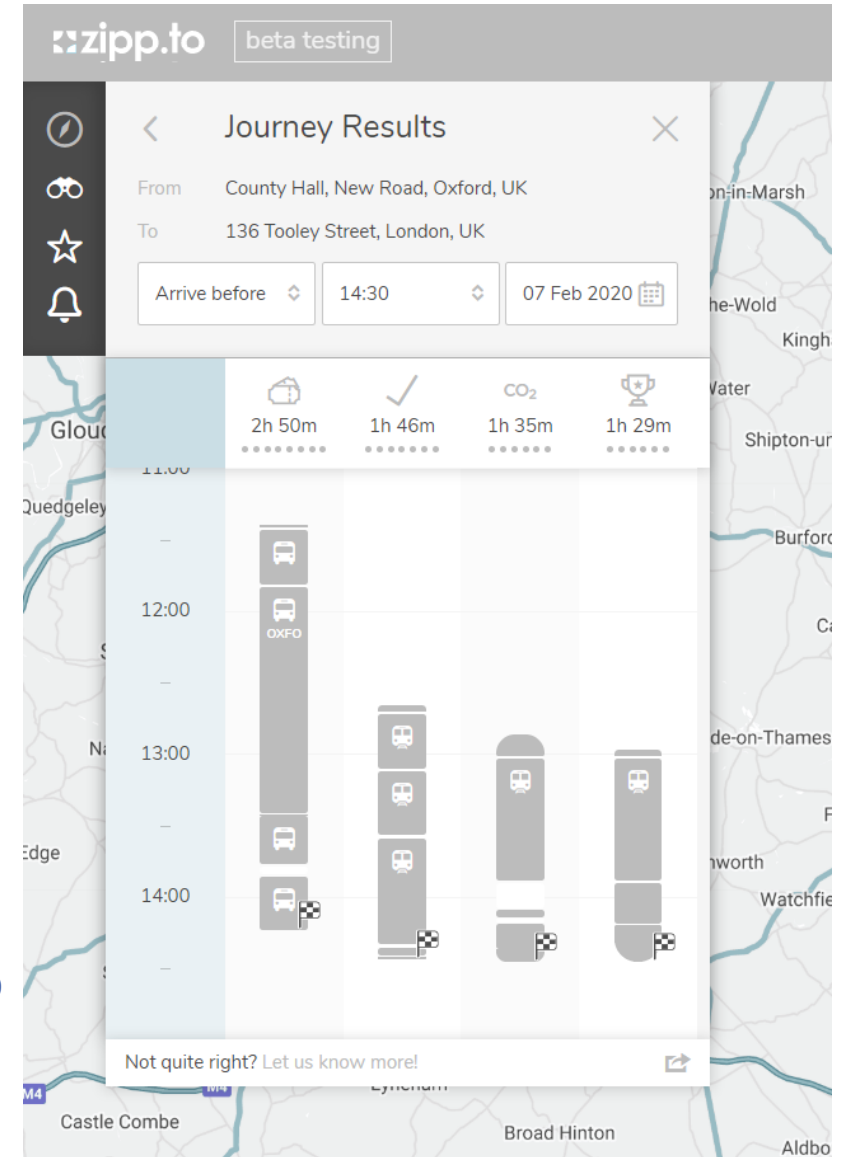
Leaving the private car behind

- Improved rural connections
- Culture change to commuting
 - Reduced need to travel
- Transport nodes outside city hubs



Transport system developments

- A healthy heartland
- Zone managed transport system
 - Utilising available data
- Integrated active travel – ‘zipp.to’ app

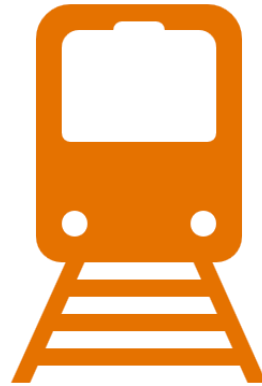


A realistic vision: Part 1



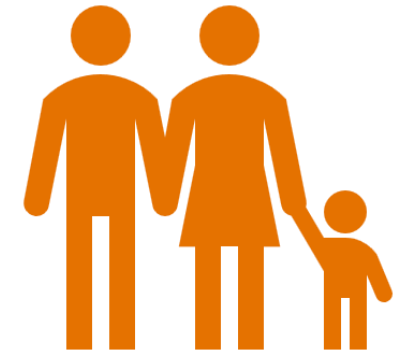
Leaving the private car behind

- Improved rural connections
- Culture change to commuting
 - Reduced need to travel
- Transport nodes outside city hubs



Transport system developments

- A healthy heartland
- Zone managed transport system
 - Utilising available data
- Integrated active travel – ‘zipp.to’ app



An intelligent road layout

- Reliable journey times
- One-way road network
 - Data supported design (See.Sense, Strava & Vivacity)

A realistic vision: Part 2





A realistic vision: Part 2



- Carries up to 50% of the good's total carbon footprint^h
- Where journey fragmentation occurs and efficiency decreases

- Intelligent infrastructure for freight vehicles
- Smart route planning informed by data

[Departments](#) [Worldwide](#) [How government works](#) [Get involved](#)
[Consultations](#) [Statistics](#) [News and communications](#)

[Home](#) > [Transport](#) > [Driving and road transport](#) > [Autonomous road vehicles](#)

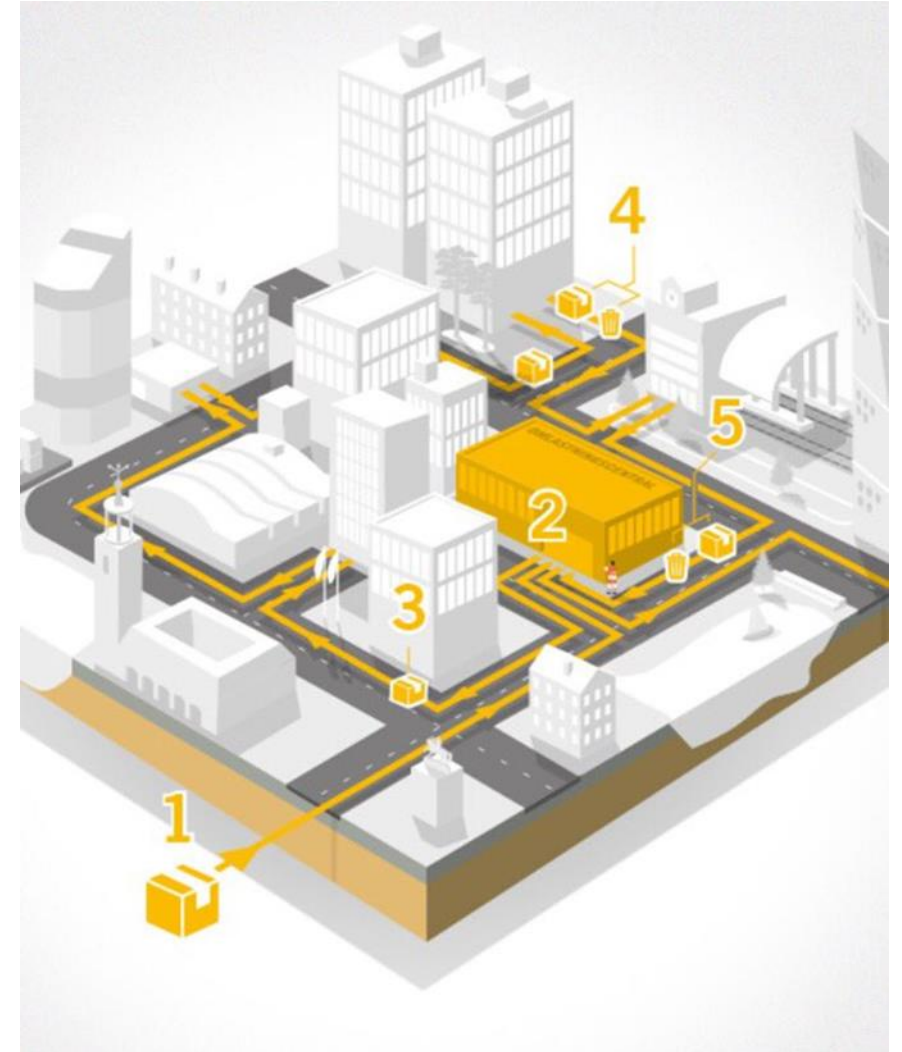
Guidance

Developing a travel network management system for new mobility: SBRI competition

A realistic vision: Part 2

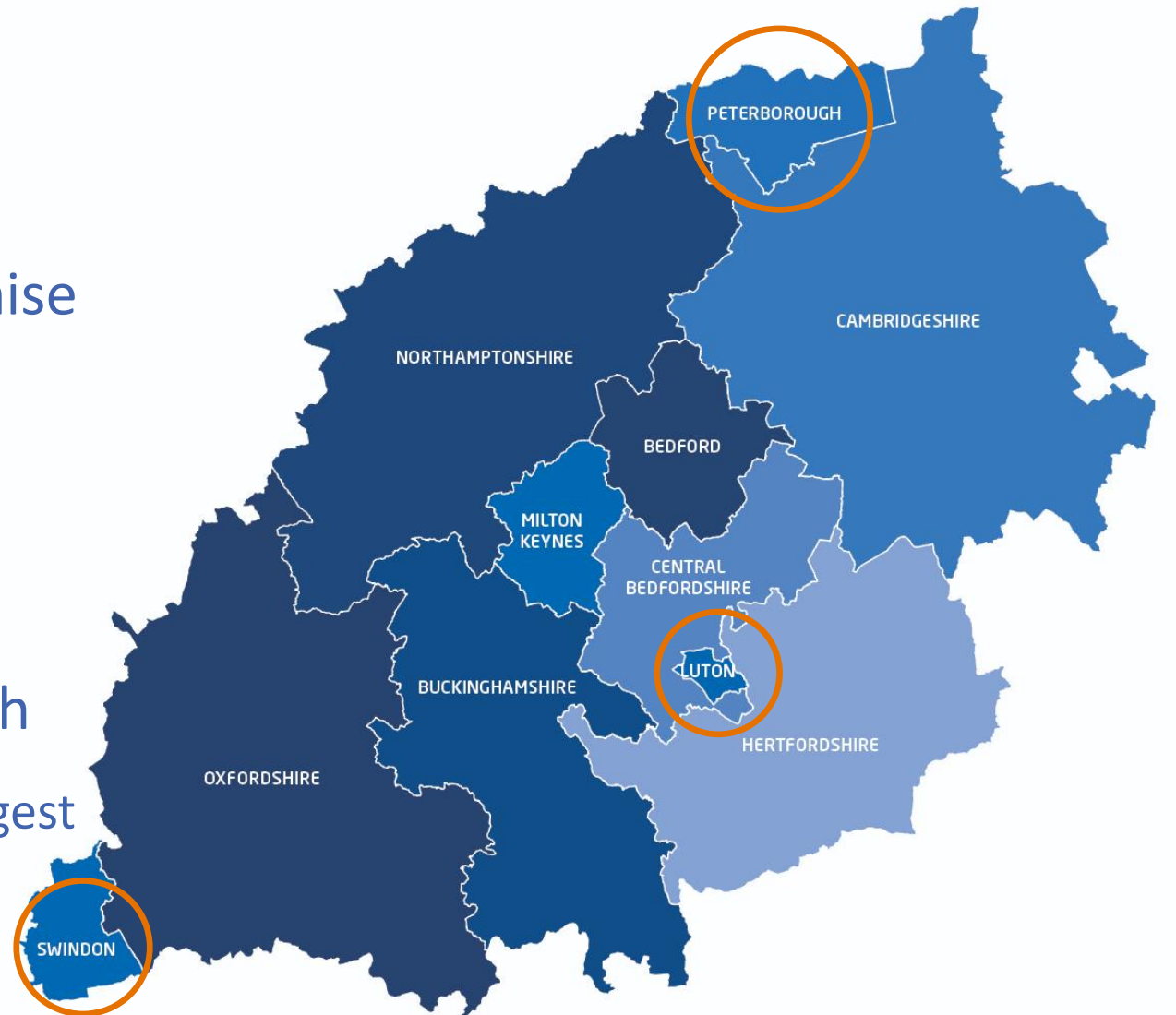


- Consolidation centres with standardised systems
- Small vehicles with dual purpose: deliver and collect
 - Out: Deliver online orders
 - Return: Collect household recycling
- Restrictions on minimum capacity of delivery vehicles



The vision in practice

- Intuitive design without compromise
 - Suitable for one-off or everyday use
- Logic based, data led design
 - Considered with targets in mind
- Inclusive, person centred approach
 - Inaccessible infrastructure is the 'biggest issue' faced by disabled people^k





Thank you for listening

Table of references

Reference	Type	Link
a	Image and information	http://www.englandseconomicheartland.com/Pages/strategic-leadership.aspx
b	UN Report	https://www.un.org/development/desa/en/news/population/2018-world-urbanization-prospects.html
c	Arcadis Report	https://www.arcadis.com/en/united-kingdom/our-perspectives/investing-in-britain/
d	LSE: Infrastructure and growth	http://www.lse.ac.uk/researchAndExpertise/units/growthCommission/documents/pdf/SecretariatPapers/Infrastructure.pdf
e	DfT: Commuting in England	https://assets.publishing.service.gov.uk/government/uploads/system/uploads/attachment_data/file/657839/commuting-in-england-1988-2015.pdf
f	RAC Foundation	https://www.racfoundation.org/motoring-faqs/mobility#a10
g	Zipp.to website	https://www.zipp.to/#!/login
h	Free University Brussels	https://cris.vub.be/files/47590095/2019_Buldeo_Rai_PhD.pdf
i	Government publications	https://www.gov.uk/government/publications/developing-a-travel-network-management-system-for-new-mobility-sbri-competition
J	Beloved City	https://www.alskadestad.se
k	Wheels for Wellbeing	https://wheelsforwellbeing.org.uk/campaigning/infrastructure-for-all/